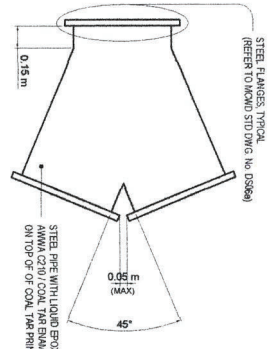


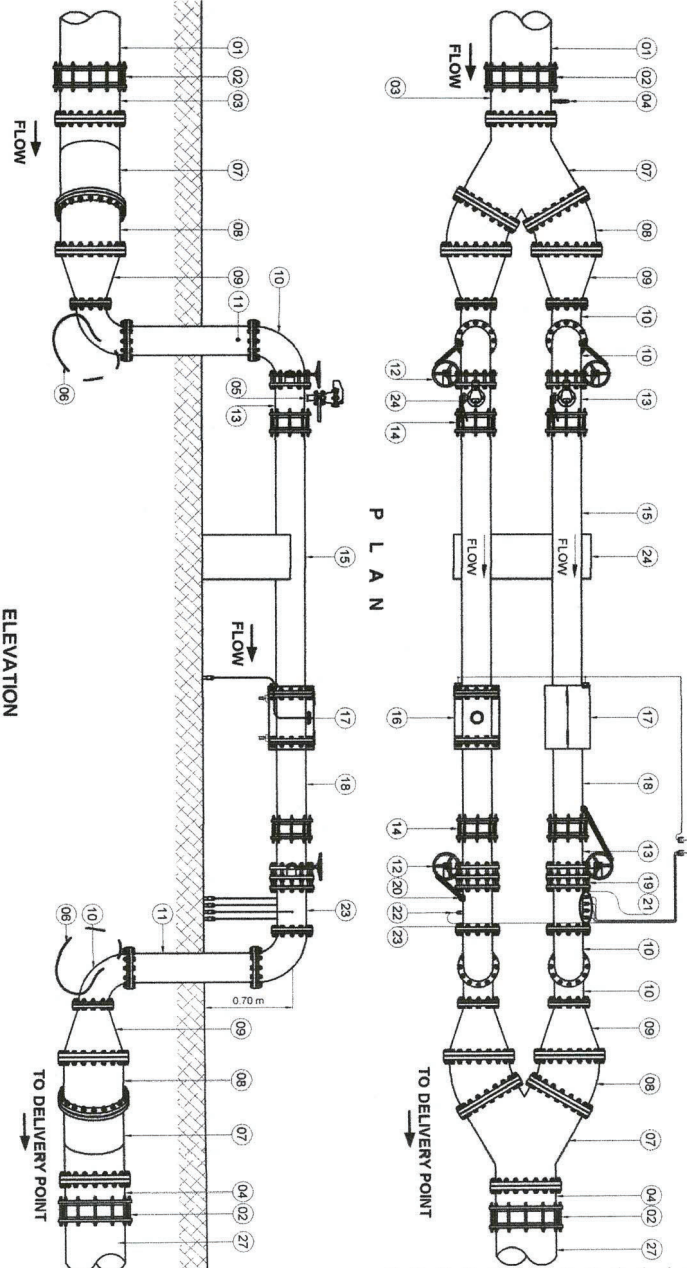
TYPICAL FLOW METER MONITOR/RECEIVER, DATA LOGGERS, & REMOTE PRESSURE GAUGE/WATER SAMPLING ASSEMBLY INSTALLATION



DETAIL OF FABRICATED SPECIAL STEEL WYE EPOXY-LINED/COAL TAR ENAMEL COATED (ELDEC)

LEGEND:

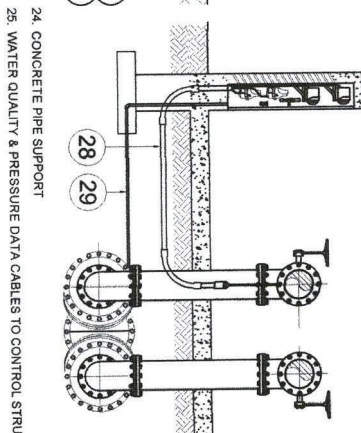
01. PROPOSED [D]₁ CONNECTING PIPELINE FROM BMS PLANT
02. [D]₂ (AT INFLOW/6500 mm (AT OUTFLOW), DUCTILE IRON FLEXIBLE COUPLING ASSEMBLY, (ADAPTION BASED ON SUPPLY PIPE MATL))
03. [D]₁ (AT INFLOW)/6500 mm DI (AT OUTFLOW), FLANGE ADAPTOR, FS (TO ADAPT PIPE MATL TO BE CONNECTED)
04. Ø20 mm (1/2") WATER SAMPLING LINE SUCTION PORT
05. Ø63 mm (2") AIR RELEASE VALVE
06. STANDARD CONCRETE THRUST BLOCK (SEE STD. DETAIL)
07. [D]₁ (AT INFLOW)/6500 mm ELDEC STEEL (AT OUTFLOW), FABRICATED SPECIAL WYE, FFF (TYPICAL OF 2), SEE DETAIL
08. [D] x 22.5° [M]₁ (AT INFLOW)/6500 mm x 22.5° DI (AT OUTFLOW), SHORT RADIUS ELBOW, FF (TYPICAL OF 2)
09. [D] x 90° [M]₁ (AT INFLOW)/6500 mm x 900 mm DI (AT OUTFLOW), STRAIGHT (CONCENTRIC) REDUCER, FF (TYPICAL OF 4)
10. Ø300 mm x 90° DI ELBOW, FF (TYPICAL OF 8)
11. Ø300 mm STEEL SPOOL*, COAL TAR EPOXY-COATED, FF (TYPICAL OF 4)
12. VALVE SECURITY AND LOCKING DEVICE, TYPICAL ON ALL VALVES INSIDE THE VAULT (SEE DETAIL ON SH# 3)
13. Ø300 mm STEEL FLANGE ADAPTOR*, FS, (COAL TAR EPOXY-COATED, TYPICAL)
14. Ø300 mm DUCTILE IRON FLEXIBLE COUPLING ASSEMBLY FOR STEEL CONNECTION (TYPICAL OF 4)
15. Ø300 mm x 1.75 m STEEL UPSTREAM FLOW STRAIGHTENING SPOOL*, FS, (REFER TO TABLE FOR LENGTH, TYP. OF 2)
16. FLOWMETER FABRICATED METAL CASING WITH LOCK (TYPICAL OF 2, SEE DETAIL)
17. Ø300 mm FULL BORE ELECTROMAGNETIC FLOWMETER SENSOR/TRANSMITTER (SHOWN WITHOUT-VIEW/ENCASMENT), TYP. OF 2 (SEE SPECIFICATIONS)
18. Ø300 mm x 900 mm STEEL DOWNSTREAM FLOW STRAIGHTENING SPOOL*, FS (REFER TO TABLE FOR LENGTH, TYP. OF 2)
19. Ø300 mm WAFER TYPE SWING CHECK VALVE WITH COUNTERWEIGHT, TYP. OF 2 (SEE SPECIFICATIONS)
20. VALVE LOCKING MECHANISM (TYPICAL FOR ALL EXPOSED VALVE HANDWHEELS)
21. WATER QUALITY & PRESSURE DATA CABLES TO CONTROL STRUCTURE
22. PRESSURE MONITORING SENSOR PORT
23. Ø300 mm STEEL FLANGE SPOOL*, FF.



P L A N

ELEVATION

OPTION 2 - SURFACE TYPE FLOW METER ASSEMBLY AT INJECTION POINT USING CONCENTRIC (STRAIGHT) REDUCERS



ELEVATION

WHERE:

- [D] = Diameter of inflow & outflow pipes
- [d] = Diameter of flow meter, connecting pipes, & its immediate fittings & appurtenances
- [M]₁ = Material of pipe
 - * = for Ø200 mm & smaller - heavy-gauge seamless, & galvanized
 - = for Ø250 mm & larger - spiral welded, epoxy-lined
- coal tar enamel coated (ELDEC) for buried instn., rubber slilyd coated (ELRAC) for surface instn.

24. CONCRETE PIPE SUPPORT
25. WATER QUALITY & PRESSURE DATA CABLES TO CONTROL STRUCTURE
26. PROPOSED ABOVE-GROUND FLOWMETER-TRANSMITTER STRUCTURE, SEE DETAIL (LOCATION FOR ACTUAL VERIFICATION)
27. Ø500 mm DI, CONNECTING PIPE TO INJECTION POINT
28. Ø 50 mm (1-1/2") PVC ELECTRICAL CONDUIT WITH 90° ELBOW, TYPICAL
29. Ø 20 mm (1/2") WATER LINE TO SAMPLING FAUCET/PRESSURE GAUGE

<p>MCOE ENGINEERING DEPARTMENT 1100 N. W. 10th Ave., Suite 200 Ft. Lauderdale, FL 33304 TEL: (954) 562-1100 FAX: (954) 562-1101 WWW.MCOEENGINEERING.COM</p>	<p>PREPARED BY: NELSON N. JORDO DATE: OCT 12, 2022</p>	<p>REG. NO. _____ P.F.R. NO. _____ DATE: _____</p>	<p>NO. _____ DESCRIPTION _____ DATE: _____ REVIEWED/ APPROVED _____</p>
	<p>DRAWN BY: NELSON N. JORDO DATE: OCT 12, 2022</p>	<p>PLACE _____ TITLE _____</p>	<p>SCALE: AS INDICATED</p>
<p>APPROVED BY: _____ DATE: _____</p>	<p>APPROVED BY: _____ DATE: _____</p>	<p>APPROVED BY: _____ DATE: _____</p>	<p>APPROVED BY: _____ DATE: _____</p>

RECOMMENDING APPROVAL:	DATE:
FIELD CHECK/REVISION:	DATE:
APPROVED:	DATE:
ELDEC/COAT/ENAMEL:	DATE: